

Begin Your VIRTUAL TOUR...
(...just a few seconds for the file to load).



Keyboard RIGHT ARROW
for next slide...



11416 Bridge Pine Dr, Riverview, FL 33569
A Popular Community with Schools & Amenities

SUMMARY

2,643 / 3,584 Heated and Total Sq/Ft – 2006

Two Story – 4 Bedrooms – 2½ Bathrooms – 3 Car Garage

Remodeled – tasteful upgrades – shows like new home.

Popular community with pool, tennis, basketball playground, park, kindergarten, elementary school.

Close to I-75, shops, restaurants – Riverview is the place to be – Tampa's #1 growing community.

MLS # T2798461 - **FULL DESCRIPTION** after pictures.



Front View – conservation Lot – no back neighbor



Formal Living Room – High Quality Laminate floors – 18' x 12'



Formal Dining Room – 18' x 9'



Kitchen w/ breakfast bar, pantry & new matching appliances – 15' x 12'



DINETTE off Kitchen with back conservation view – 11' x 10'



Family Room with stairs to bonus & bedrooms 2,3&4 – 18' x 15'



Family Room with back view



Family Room off Kitchen & Dinette



Stairs to Bonus Room, Office nook, Bedrooms 2-4 & Bathroom 2



Family Room with sliding doors onto back Patio/Lanai



Downstairs Master Bedroom with large walk-in-closet – 18' x 15'



Master Bathroom w/ granite counters, dual basins & garden tub



Master bathroom with separate shower & private W.C.



Downstairs guest half bathroom



Bonus Room – 21' x 15'



Bonus Room with separate office/homework nook – 10' x 7'



Bedroom 2 – 14' x 10'



Bedroom 3 – 12' x 10'



Bedroom 4 – 12' x 10'



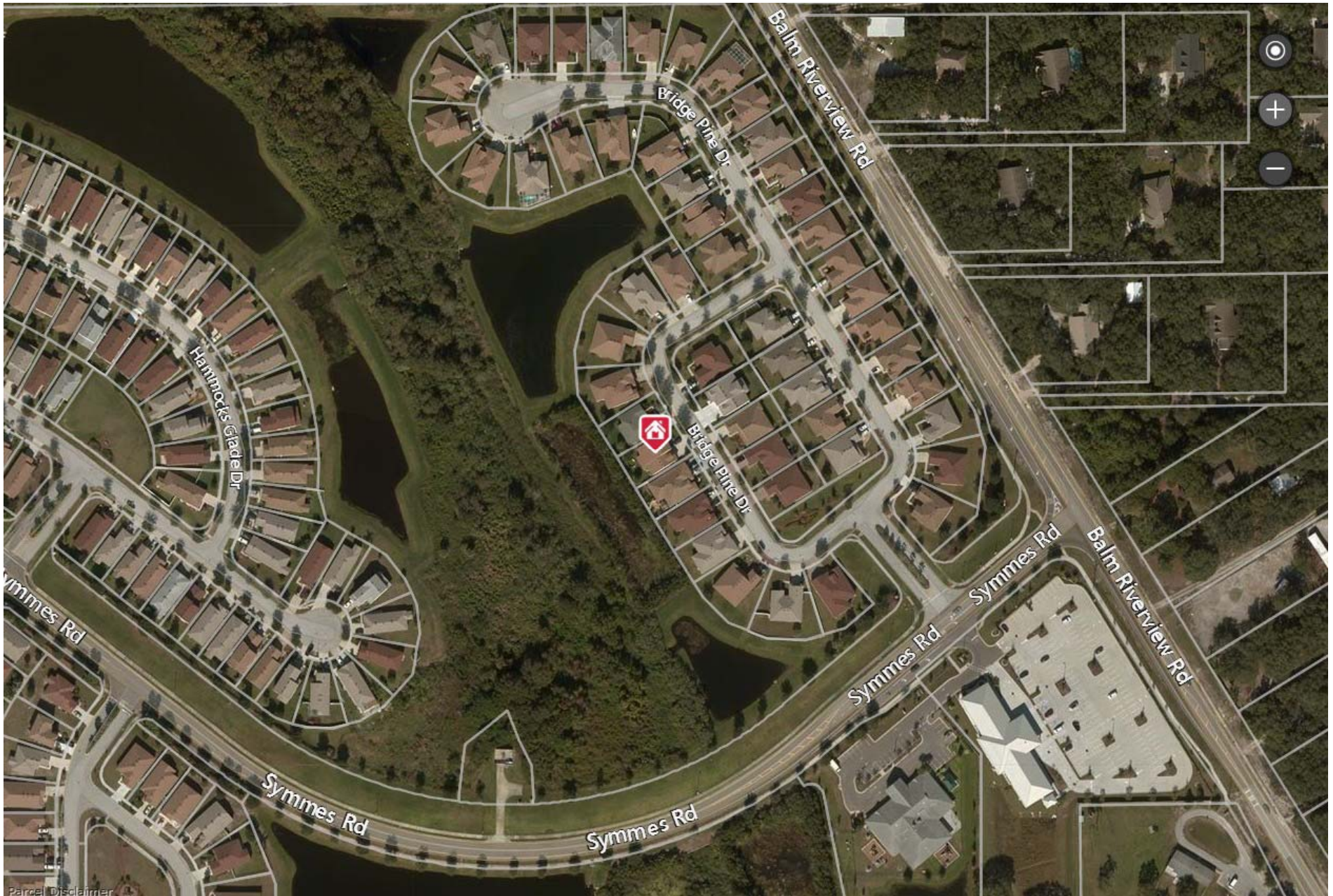
Bathroom 2 with shower in Tub, dual vanities and framed mirrors



Downstairs Closet Laundry with new Washer & Dryer



Large Covered Back Patio/Lanai overlooking Conservation Lot



Conservation Lot – no back yard neighbor



Pools, Hot Tub, Clubhouse, Tennis, Basketball, Playground

FULL DESCRIPTION

- 4/2.5/3 – Two Story – 2,643 / 3,584 Heated & Total Sq/Ft – 2006
- **Totally renovated** - shows like a new model home - new A/C & appliances - high quality Laminate floors
- **Rivercrest** is a sought after well situated community; it has it's own Kindergarten & Elementary schools, Pool, Playground, Park, Tennis Courts & Basketball
- Conservation Lot - no back neighbor - back fence on order
- Formal LIVING ROOM with front view
- Formal DINING ROOM off Kitchen
- Attractive KITCHEN with breakfast bar, pantry, new matching appliances & wine cooler
- DINETTE off Kitchen with back conservation view
- FAMILY ROOM off Kitchen & Dinette, with stairs to Bonus Room & Bedrooms 2-4 – sliding doors onto back Patio/Lanai
- Downstairs MASTER BEDROOM with large walk-in-closet
- MASTER BATHROOM with granite counters, dual basins, framed mirrors, garden tub, separate shower & private W.C.
- Downstairs guest HALF BATHROOM
- Upstairs BONUS ROOM with separate office/homework nook
- Upstairs BEDROOMS 2-4 adjacent to BATHROOM 2 with shower in Tub, vanity & framed mirror
- Downstairs Closet LAUNDRY with new Washer & Dryer
- Sliding doors onto covered back PATIO/LANAI with back conservation view
- Attached 3 CAR GARAGE with remote opener, side door & 2nd refrigerator
- Close to I-75, shops & restaurants – Riverview is the place to be – Tampa's #1 growing community – Welcome HOME!!!

directions

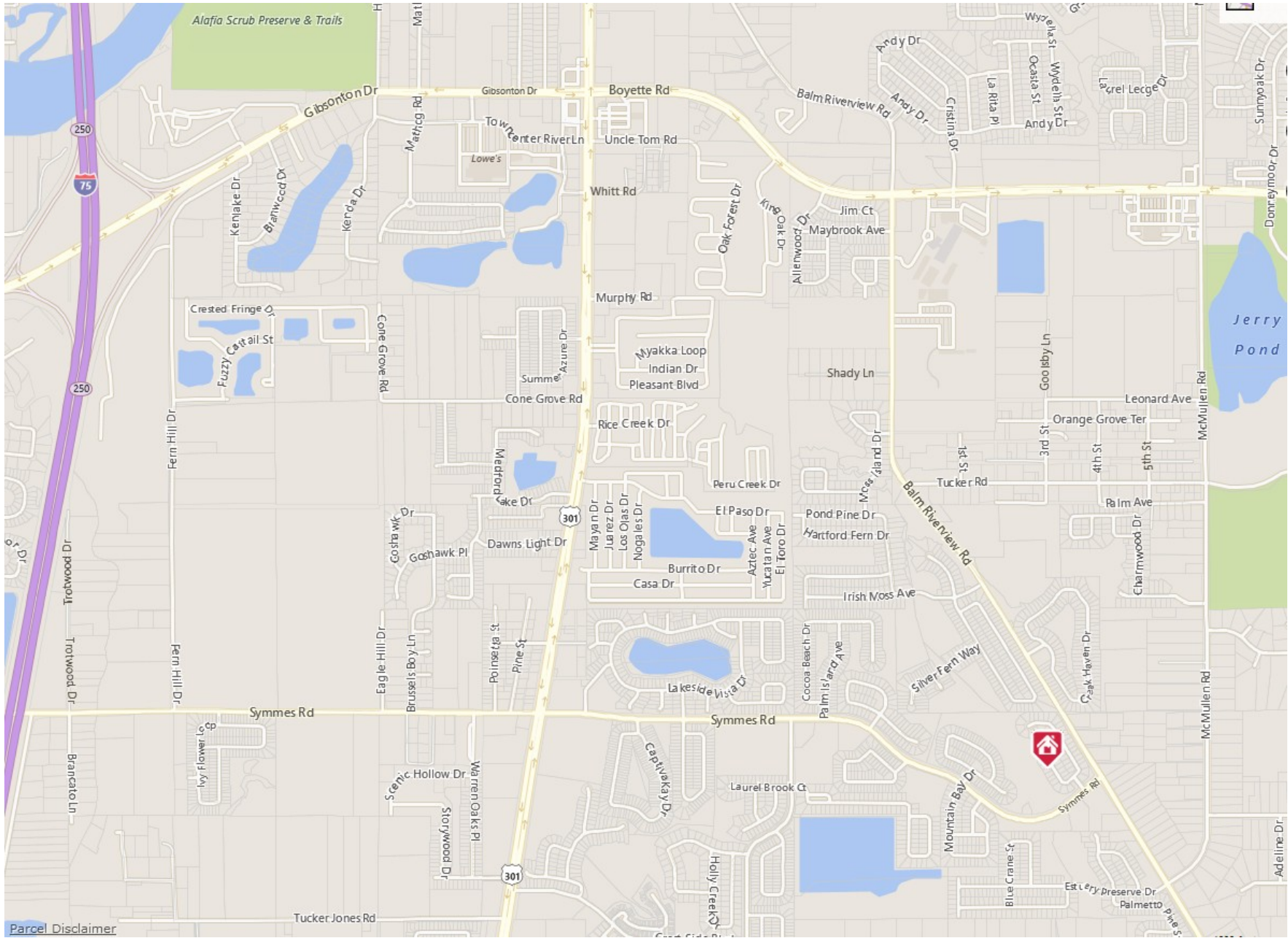


11416 Bridge Pine Dr, Riverview, FL 33569

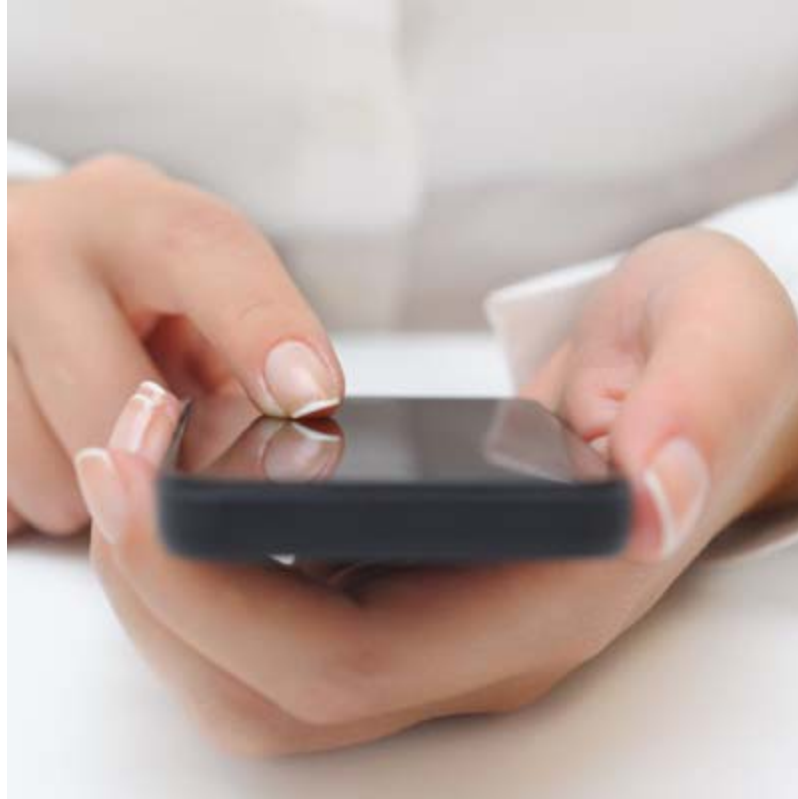
From I-75 go East on Gibsonton, South on 301, Left into Symmes Rd, 6th Left into Bridge Pine, Left at T-junction, 7th house on your left.

There's
no
place
like
home.





Conveniently Located with Quick Access to I-75



SCHEDULE TO VIEW THIS PROPERTY

END