

Begin Your VIRTUAL TOUR...
(...just a few seconds for the file to load).



Keyboard RIGHT ARROW
for next slide...



8010 Carriage Pointe Dr, Gibsonton, FL 33534
A Well Situated Community with a quick commute into Tampa

SUMMARY

1,301 / 1,789 Heated and Total Sq/Ft – 2005

One Story – 3 Bedrooms – 2 Bathrooms – 2 Car Garage

Privacy Lot with conservation view – no back neighbors

Conveniently located with Quick Access N on 41 to Tampa/MacDill AFB or to I-75

Shops, Restaurants & Entertainment close by.

MLS # T2895539 - FULL DESCRIPTION after pictures.



Front View – servitude Lot – conservation view – no back neighbors



Living Room – New High Quality Bamboo floors – 22' x 15'



Living Room



Living Room



Living Room sliding doors onto back Patio/Conservation Lot



Open Plan Living Room onto Kitchen



Living Room onto Kitchen – space for Dining Room table



Kitchen with Breakfast Bar



Kitchen with granite counters & ceramic tiled floors – 14' x 13'



Kitchen with matching appliances



Eating space in Kitchen



Large Master Bedroom – 15' x 12'



Master Bedroom



Master Bathroom with garden tub



Bedroom 2 – 12' x 11'



Bedroom 3 – 11' x 11'



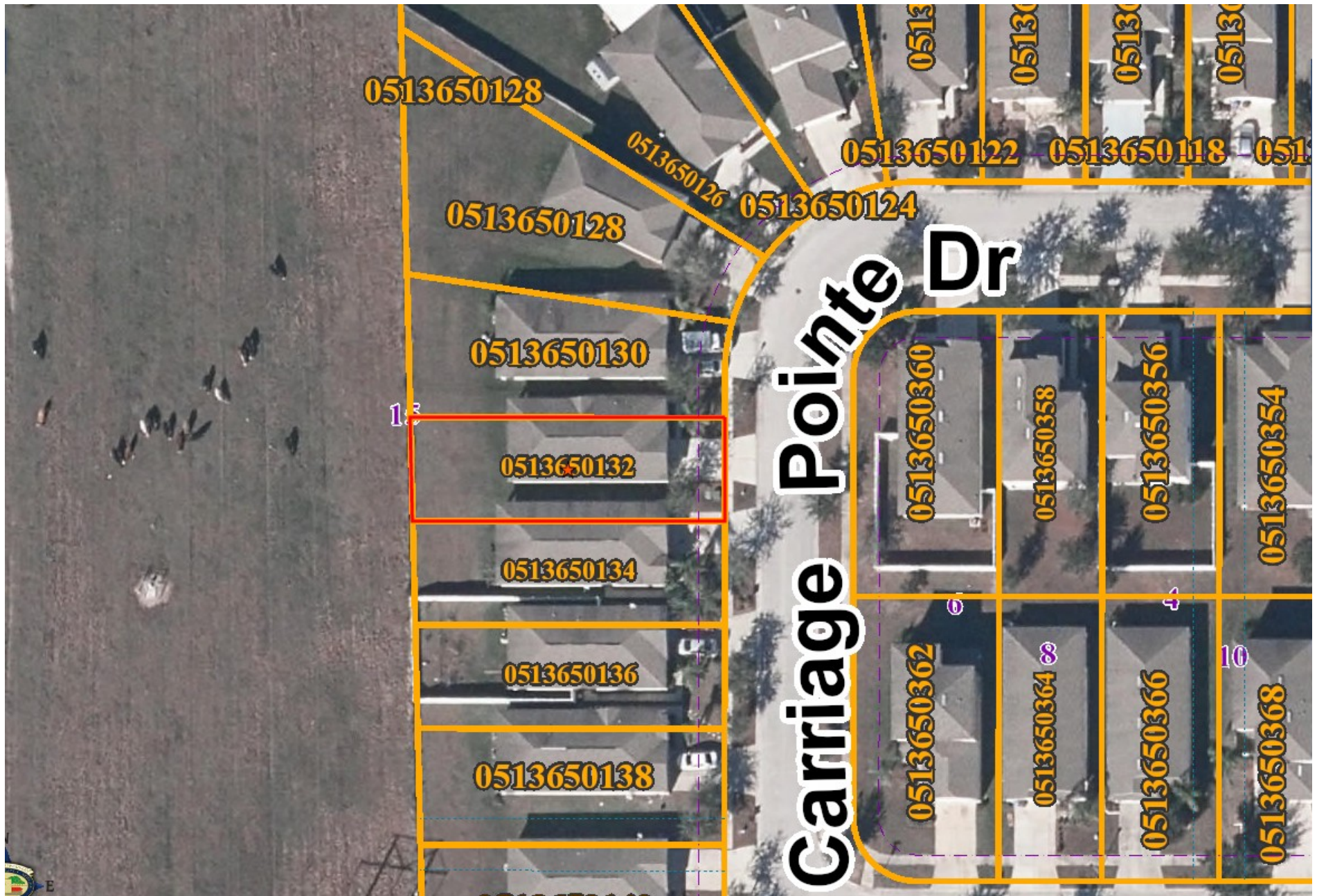
Bathroom 2 with shower in Tub, basin and vanity



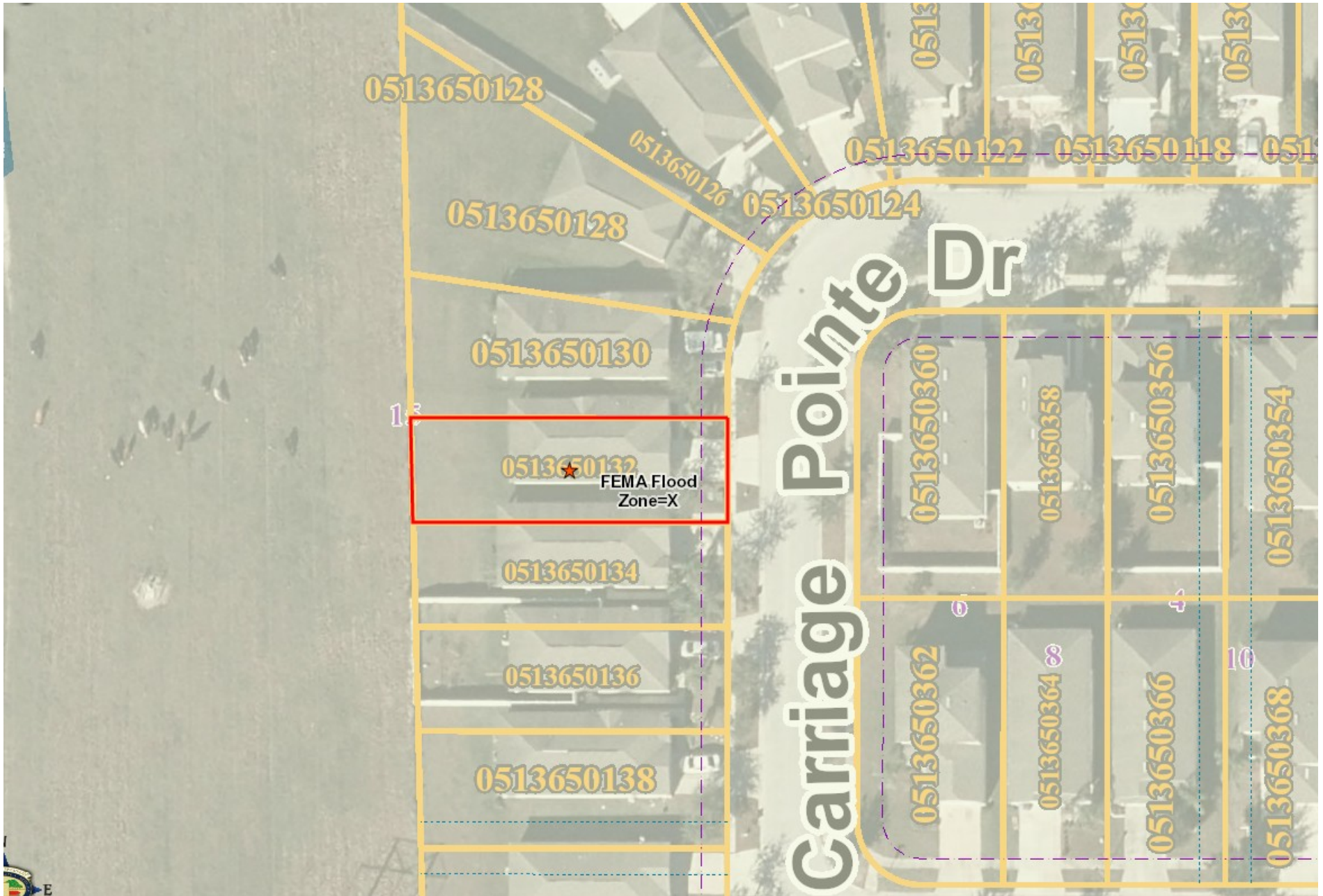
Laundry



Patio overlooking large back yard & conservation view



Privacy Lot with servitude behind – conservation view – no back neighbors



Flood Zone 'X' – no flood insurance required

FULL DESCRIPTION

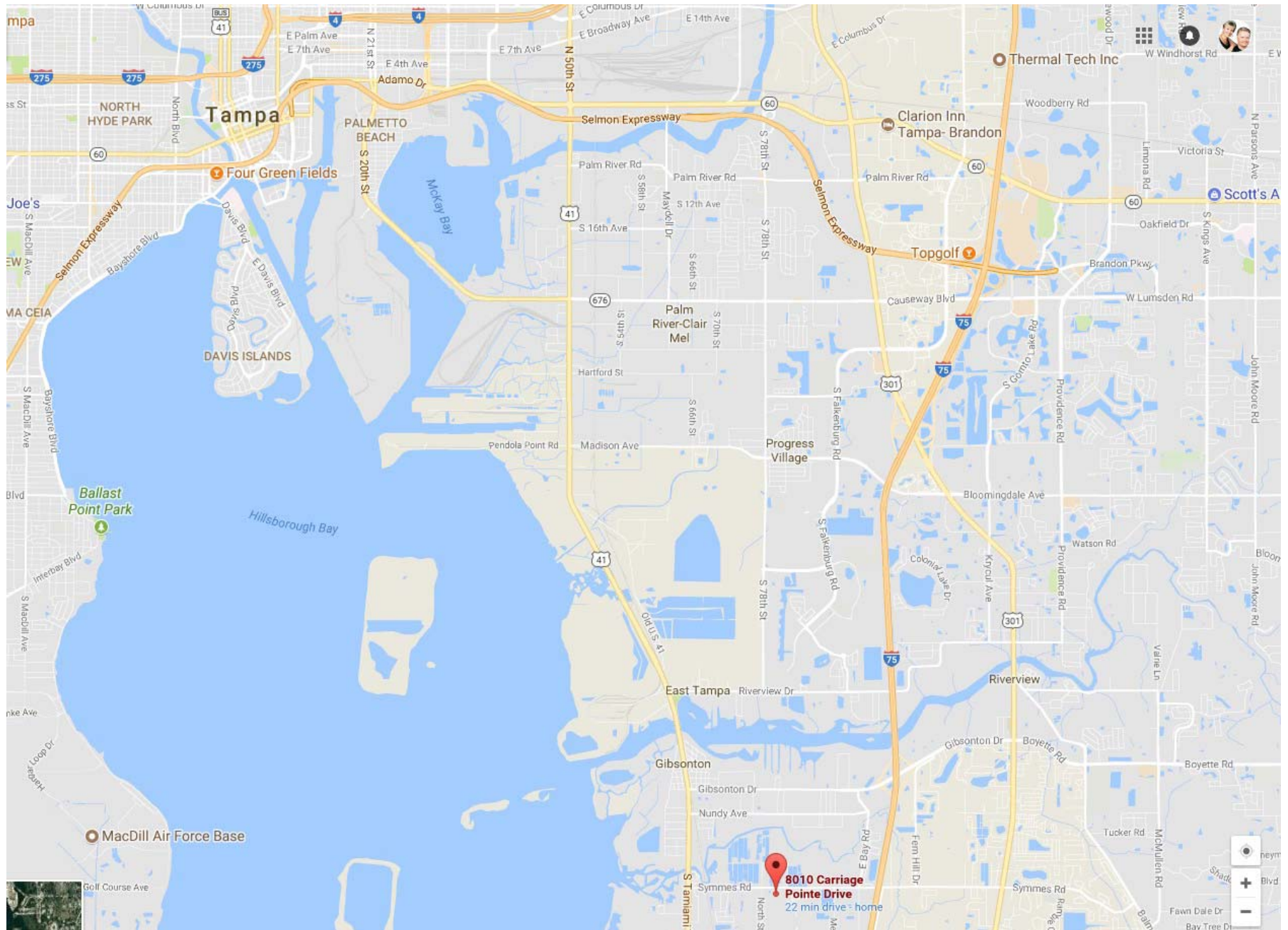
- 3/2/2 – One Story – 1,301 / 1,789 Heated & Total Sq/Ft – 2005
- Privacy Lot with servitude behind – conservation view – no back neighbors
- Large LIVING ROOM with sliding doors onto covered back Patio
- All living areas & bedrooms have New High Quality Bamboo flooring - \$6.75 per Sq/Ft
- Space for Dining Room table between Kitchen & Living Room
- KITCHEN with Breakfast Bar, granite counters, ceramic tiled floors, pantry & matching appliances
- Eating space in Kitchen
- Large MASTER BEDROOM with back view
- MASTER BATHROOM with garden tub
- BEDROOM 2
- BEDROOM 3 with front view
- BATHROOM 2 with shower in Tub, basin and vanity
- LAUNDRY
- PATIO overlooking large back yard & conservation view
- Flood Zone 'X' – no flood insurance required
- Conveniently located with Quick Access N on 41 to Tampa/MacDill AFB or to I-75
- Shops, Restaurants & Entertainment close by – welcome HOME!!!

directions

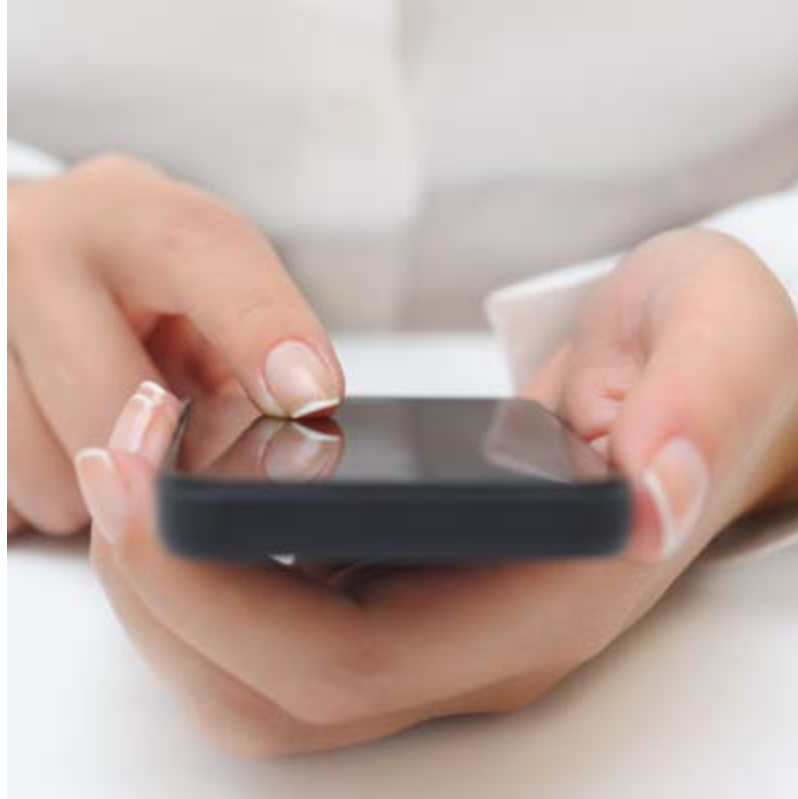
8010 Carriage Pointe Dr, Gibsonton, FL 33534

From 301 West on Symmes for about 2 miles, Left on Ekker, 1st Right on Carriage Pointe, #8010.

There's
no
place
like
home.



Conveniently located w/ Quick Access N on 41 to Tampa or to I-75



SCHEDULE TO VIEW THIS PROPERTY

END