

**Begin Your VIRTUAL TOUR...**  
**(...just a few seconds for the file to load).**



**Keyboard RIGHT ARROW**  
**for next slide...**



**6819 Guilford Crest Dr, Apollo Beach, FL 33572**  
**Great Community, Schools & Quick Access N or S**

# SUMMARY

4 / 2.5 / 2 +Bonus Room +Loft +Conservation +Cul-de-sac  
2,947 / 3,527 Heated and Total Sq/Ft – 2006

Larger fan-shaped privacy CONSERVATION lot.

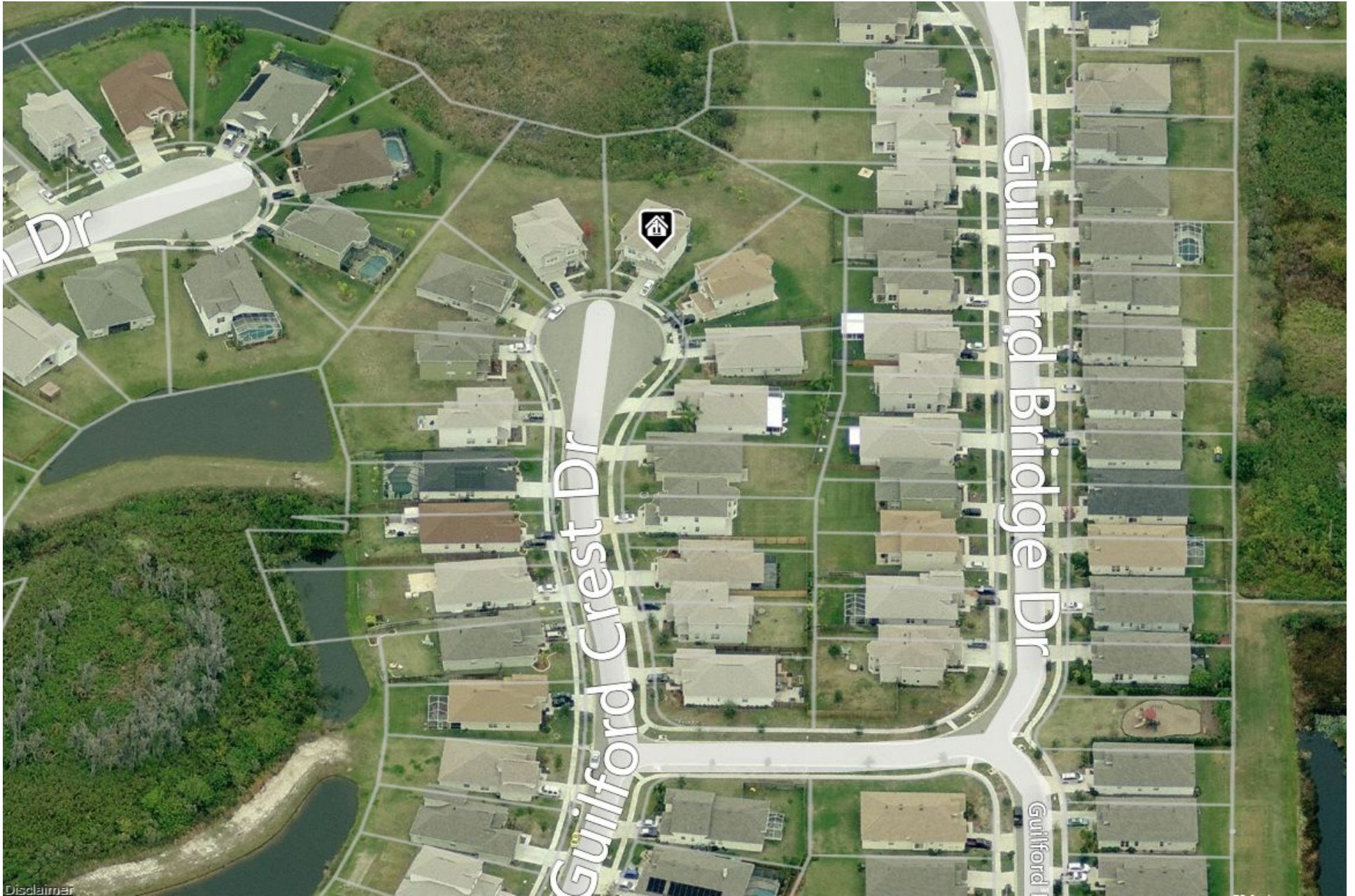
Community Clubhouse, Pool, Tennis, Basketball,  
Baseball, Volleyball, Play-park & Elementary School.

Apollo Beach is a great Tampa Bay location for very  
Quick Access North, South or into Tampa.

MLS # T2876005 - **FULL DESCRIPTION** after pictures.



**Front View**



**Cul-de-sac – larger fanned-shaped conservation lot**



**Entrance Foyer**



**Large Open Dining Room 15' x 12'**



**Dining Room onto Family Room**



**Large well-lighted Family Room with volume ceilings 18' x 16'**





**Family Room onto Kitchen**



**Kitchen w/ granite, island, breakfast bar & walk-in Pantry 18' x 12'**



**Large Dinette off Kitchen 14' x 12'**



**Dinette with triple sliders onto Patio and conservation view**



**Master Bedroom 14' x 13'**



**Master Bedroom**



**Master Bathroom with Garden tub & separate shower**



**Large garden tub to soak yourself into relaxation**





**Master Bathroom with granite – dual under-counter sinks**



**Bedroom 2 – 12' x 10'**



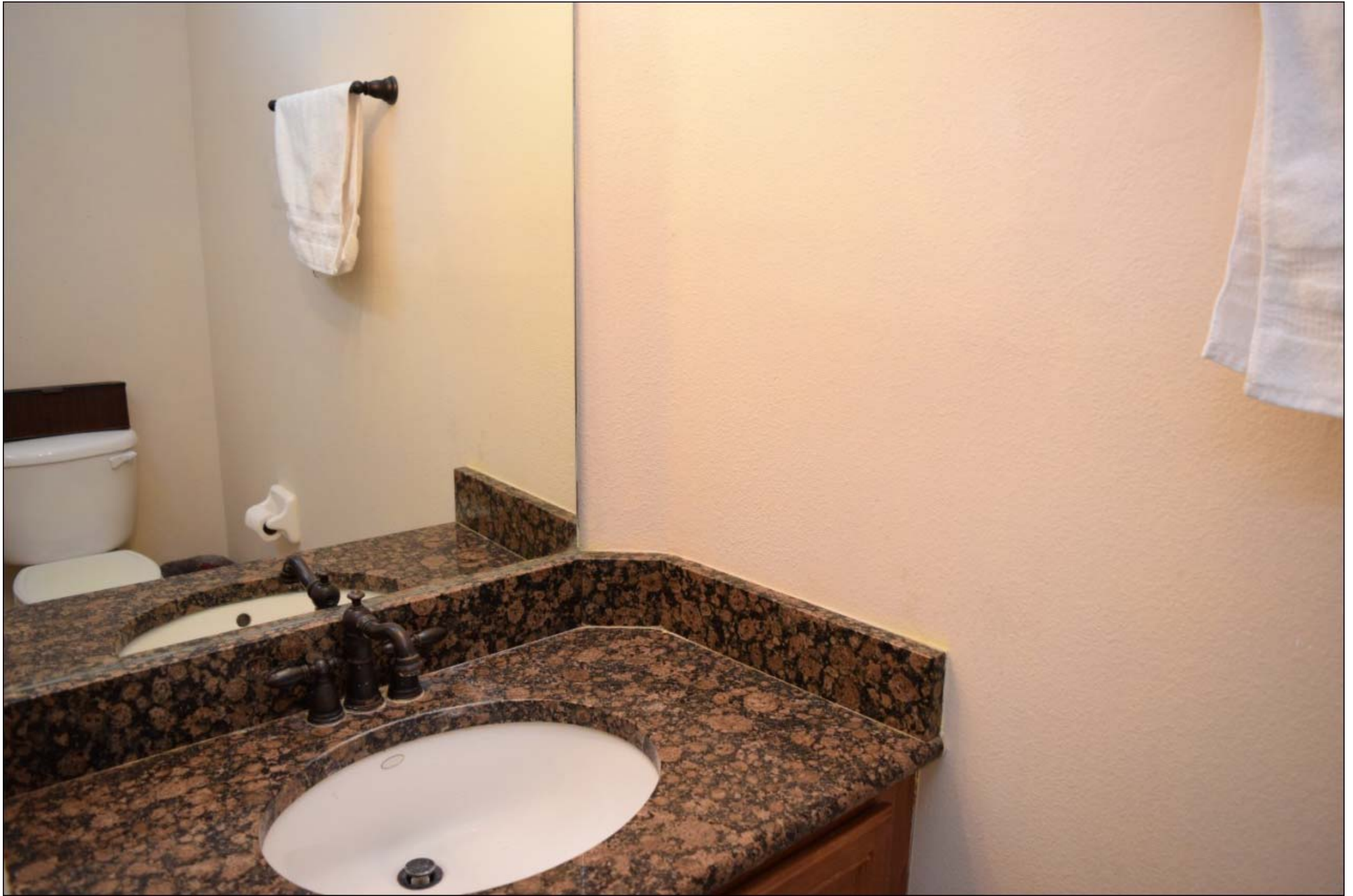
**Bedroom 3 – 12' x 11'**



**Bathroom 2 with shower in Tub and granite vanity**



**Downstairs Bedroom 4 or Office – 12' x 10'**



**Downstairs Half-Bathroom**



**Open Loft Area – could be an office or homework station**



**Bonus Room or TV man-cave – 17' x 14'**





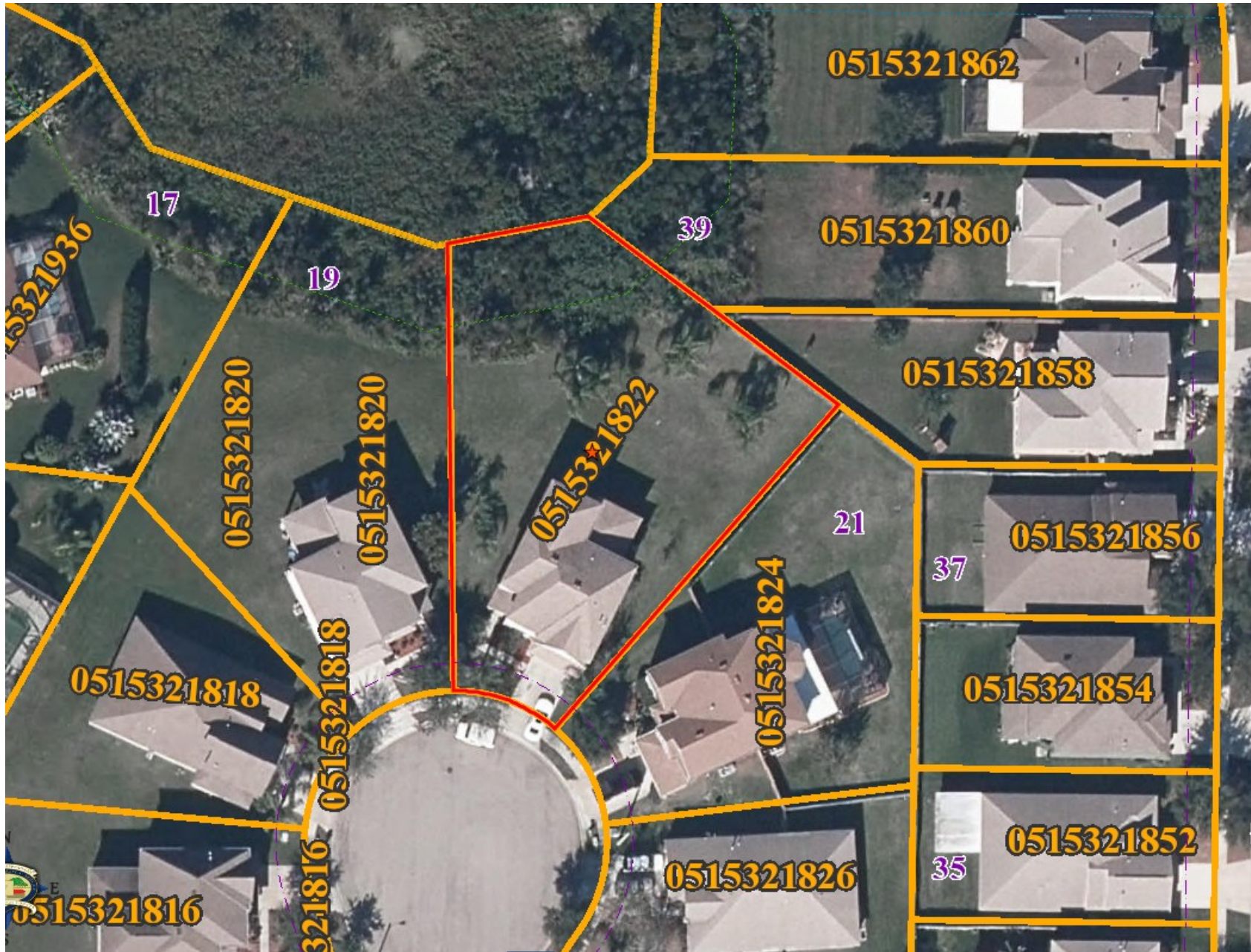
**Laundry onto 2 Car Garage – long walk-through Pantry to Kitchen**



**Private Back Covered Patio**



**Large back yard with Conservation View**



**Larger Fan-shaped lot with conservation view**



**Covington Park – another stellar Newland Community Development**



**Community Clubhouse, Pool, Tennis, Basketball, Baseball, Volleyball,  
Play-park & Elementary School**



**Community Clubhouse**



**Community Pool**





**Community Play Park**



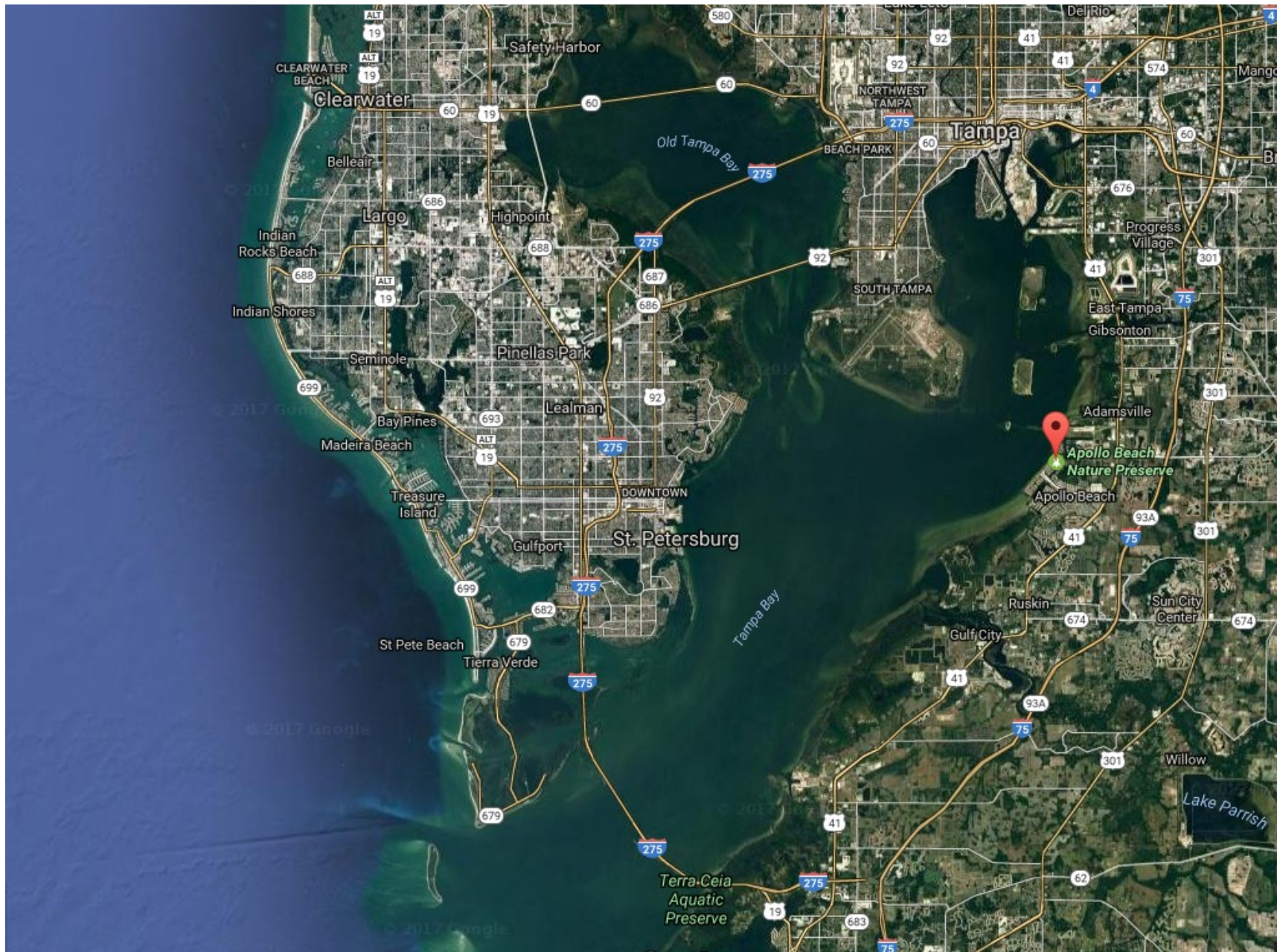
**Clock Tower at Stone Garden Park**



**Apollo Beach Nature Park on Tampa Bay**



**Aerial View of Apollo Beach Nature Preserve on Tampa Bay**



**Apollo Beach on Beautiful Tampa Bay – a fishing paradise**

## FULL DESCRIPTION

- 4/2.5/2+Bonus+Loft+Conservation -- 2,947 / 3,527 Heated and Total Sq/Ft – 2006.
- Larger fanned-shaped privacy conservation lot.
- Entrance FOYER -- Large Open DINING ROOM.
- Large well-lighted FAMILY ROOM with volume ceilings.
- KITCHEN with granite, 42" Nutmeg cabinets w/ crown molding, island, breakfast bar, long walk-in Pantry, desk station & matching stainless steel appliances.
- Large DINETTE off Kitchen with triple sliders onto back Patio.
- MASTER BEDROOM -- MASTER BATHROOM with Garden tub, separate shower and dual granite under-counter sinks.
- BEDROOM 2 & 3 share BATHROOM 2 with shower in Tub and granite vanity.
- Downstairs BEDROOM 4 or Office with Half-Bathroom.
- Open LOFT area which could be a large office or multiple homework station.
- BONUS ROOM or TV man-cave.
- LAUNDRY onto 2 Car Garage.
- Back Covered PATIO with privacy Conservation View.
- \$35,000 upgrade package including double pane windows, R30 insulation & dimensional shingles.
- Community Clubhouse, Pool, Tennis, Basketball, Baseball, Volleyball, Play-park & Elementary School.
- Apollo Beach is a great Tampa Bay location for very Quick Access North, South or West into [Tampa](#).
- Welcome HOME!!!

# directions

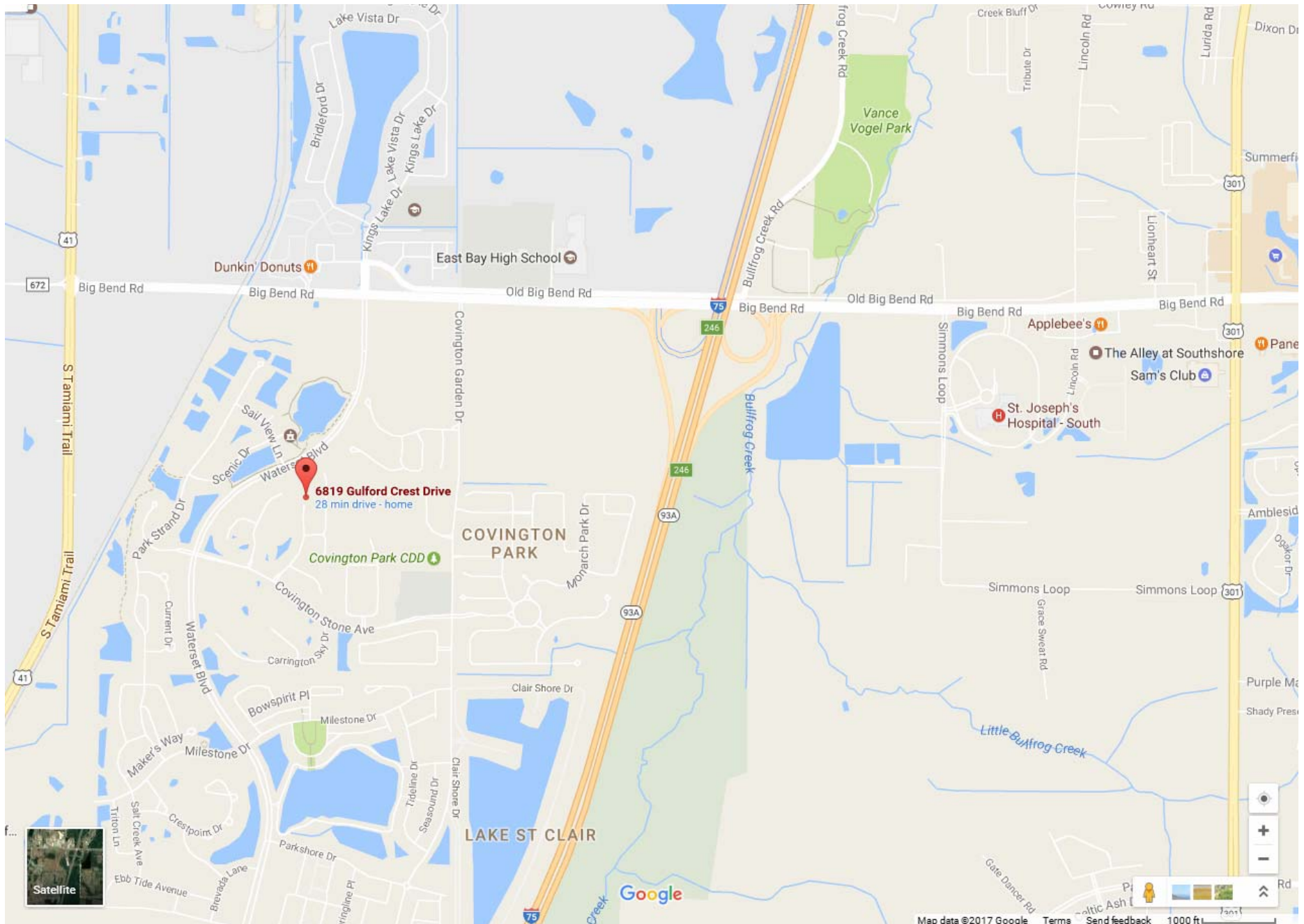


6819 Guilford Crest Dr, Apollo Beach, FL 33572

From I-75 take exit 246 -- West on Big Bend Rd -- Left at light into Covington Garden Dr -- 3rd right onto Covington Stone Ave -- 2nd right onto Guilford Crest Dr to end of cul-de-sac.

There's  
no  
place  
like  
**home.**





**Greatest location for Quick Access North, South or Tampa**





**SCHEDULE TO VIEW THIS PROPERTY**

**END**